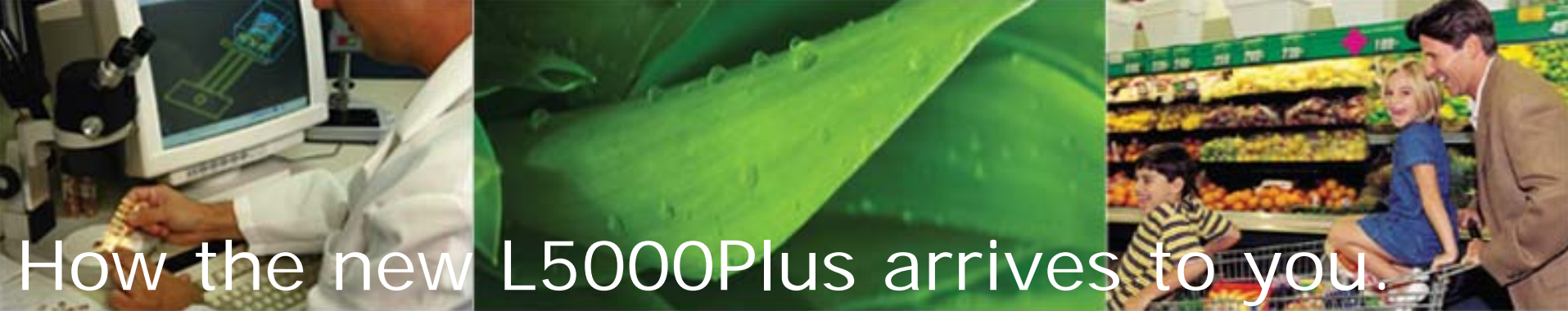


# What's New with L5000Plus vs. Summit E

***Beta***



How the new L5000Plus arrives to you.



### L5000 Plus

New 3 & 5 Pump main units will replace all previous versions  
3 & 5 pump unit can be configured with pump on side  
Main units will now include trigger module and programmer  
600 Series Snaphead cartridge becomes standard on all units



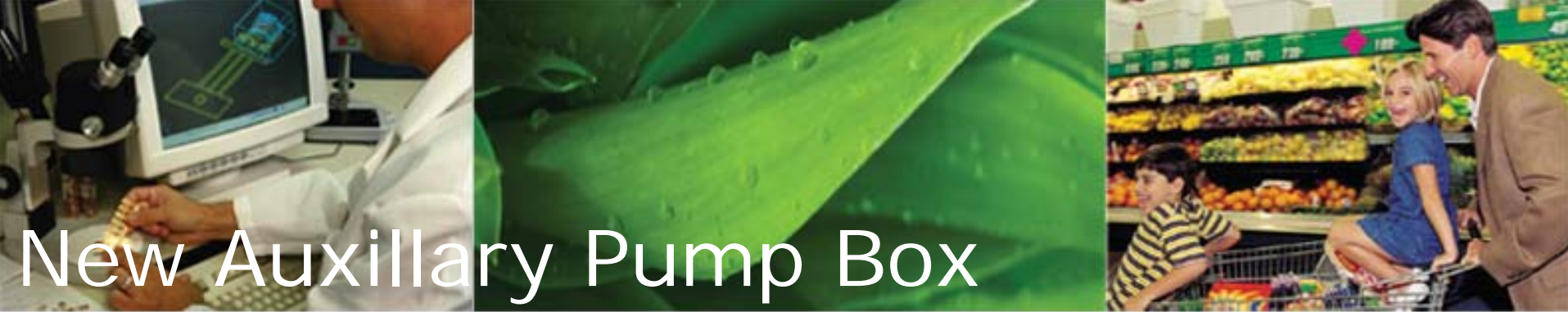
L5000Plus

### Standard kit includes:

- New Trigger Module
- Cable Kits
- Cartridge Heads & Tube

3 & 5 pump main units





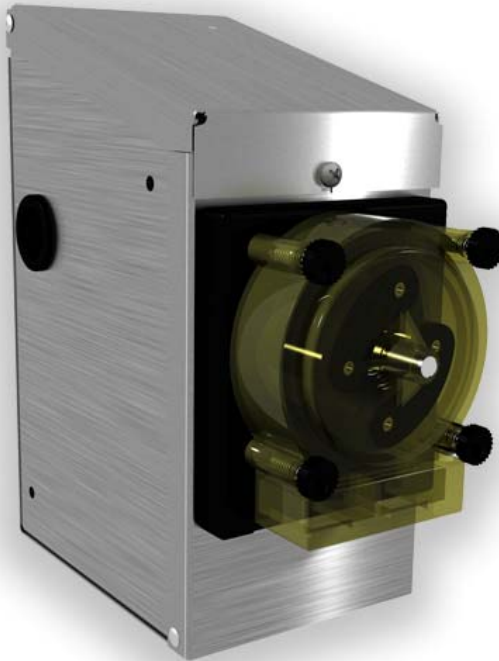
# New Auxillary Pump Box

**A new single pump Aux unit replaces all old Aux units**

Slim design ensures minimal wall width

Can be bolted together for levelling, rigidity and mounting ease.

Flexibility of adding extra pumps quickly

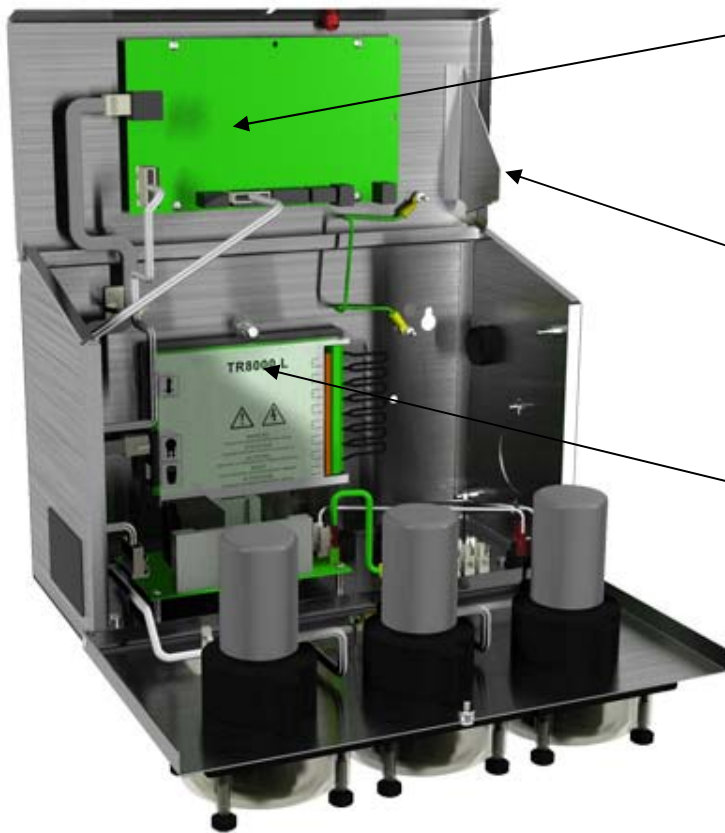
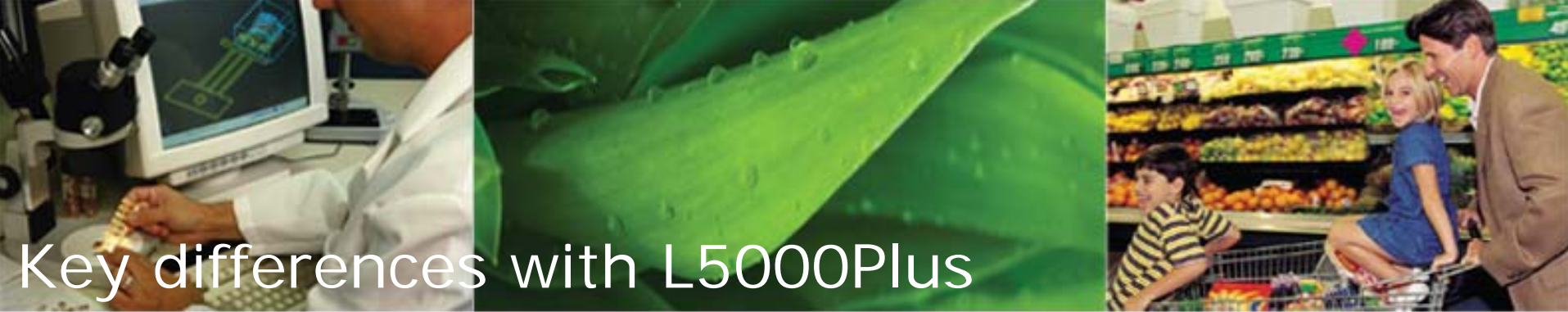


**L5000 Plus**

**1 pump aux unit**







Firmware upgrades

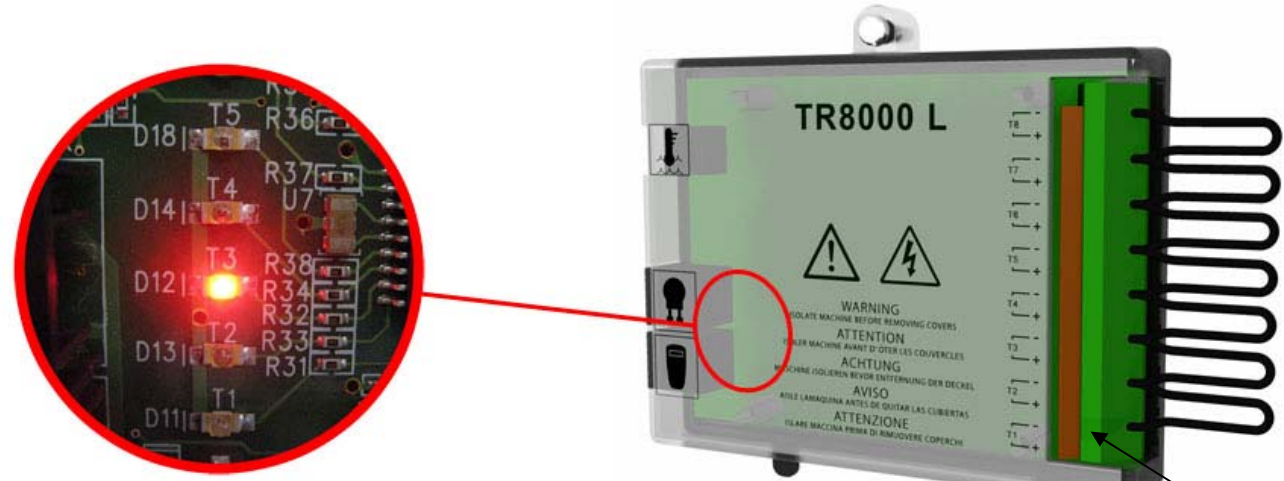
- V.3.00

New latch, holds lid in position for easy of wiring

New trigger module allows quick on-site configuration



# Key differences with L5000Plus



Reversed connectors allow easier cable release

Improved trigger connections allow easier insertion of wires

## • New TR8000 L replaces all TR6000 & TR8000 modules.

- New slim enclosure allows internal and external use
- Backwards compatible with all L5000E and XL systems
- Trigger LED's to indicate signal arrival and for fault finding
- Single screw removes Trigger module from main unit

**L5000Plus**

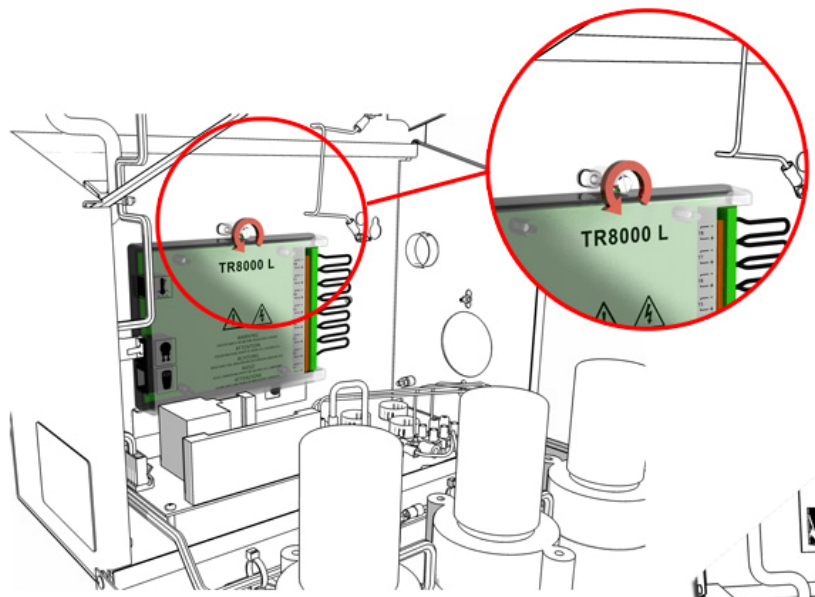
**TR8000 L**





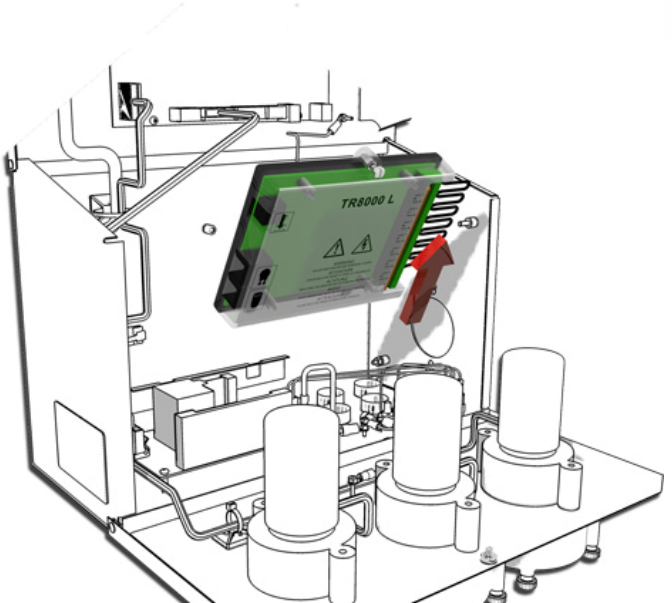


# Key differences with L5000Plus



Single screw removal of trigger module

Module removed in seconds, for use externally



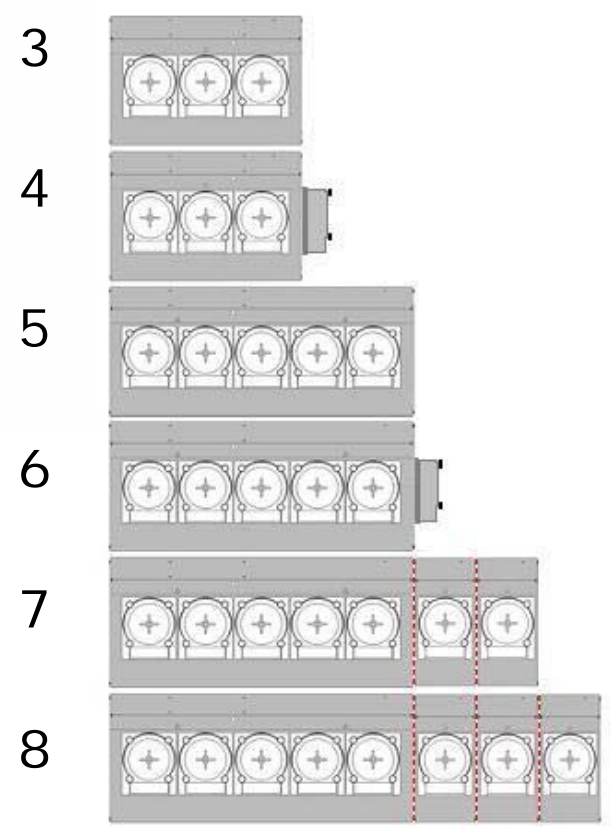
**L5000Plus**

**Removing TR8000 L**





# Configurations



Total Pumps	Main Unit	Aux Box
3	3 Pump	0
4	3 pump	0
5	5 pump	0
6	5 pump	0
7	5 pump	2
8	5 pump	3





# Support Documentation

- New documentation makes the installation and operation of the new L5000Plus easier to use, all documentation can be found by going to [www.beta-technology.com/Laundry\\_L5000Plus.html](http://www.beta-technology.com/Laundry_L5000Plus.html) or by talking to your local sales representative.
  - Quick Install and Programming Guide
  - Installation and Setup Guide
  - Programming Guide
  - Preventative Service Guide
  - Reference Guide

**Beta**





## What is the same

- Same Programmer
- Same programming
- Uses 600 Series pumps  
(still can replace larger pumps with 100 series pumps)
- Minimal re-training required
- Backwards compatible parts